



## Teachers Way , Melksham SN12 8FA

- Shared Ownership at 40%
  - Kitchen/Diner
  - Generous Garden
- Walking Distance to Town Centre
- Two Double Bedrooms
- Parking for Two Vehicles
- Outskirts of Melksham

**£100,000 Leasehold - Share of Freehold**





## Location

### Hall

External door, radiator, stairs to first floor and doors to living room, kitchen/diner and WC.

### Kitchen/Diner

16'5" x 7'9"

Fitted with a matching range of base and eye level units with worktop space over, 1+1/2 bowl stainless steel sink, space for fridge/freezer, washing machine and tumble dryer, fitted oven and four ring gas hob, window to front elevation and radiator.

### Living Room

9'7" x 15'0"

Window to rear elevation, radiator and external door to garden.

### WC

Fitted with a two piece suite comprising wash hand basin and WC with radiator.



### **Landing**

Storage cupboard and doors to bedrooms and bathroom.

### **Bedroom One**

10'10" x 15'0"

Two windows to front elevation, two radiators and over stairs storage.

### **Bedroom Two**

8'4" x 15'0"

Window to rear elevation and radiator.

### **Bathroom**

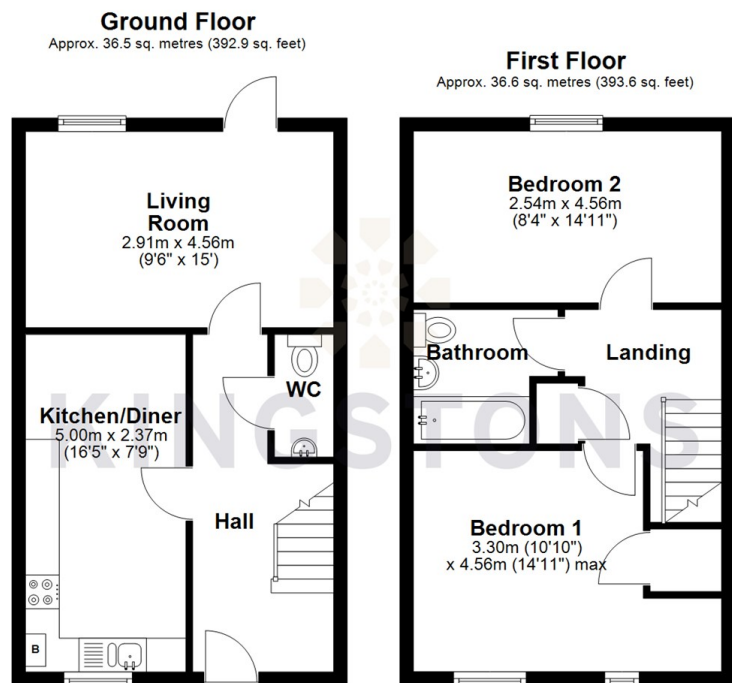
Fitted with three piece suite comprising bath with shower over and folding glass screen, wash hand basin and WC with radiator.

### **Outside**

Parking for two vehicles and side access to enclosed rear garden.



Local Authority **Wiltshire**  
Council Tax Band **B**  
EPC Rating **B**



**KINGSTONS**  
**Melksham Office**

11 High Street, Melksham,  
Wiltshire, SN12 6JR

**Contact**

01225709115  
sales@kingstons.biz  
www.kingstons.biz

Agents Note: Whilst every care has been taken to prepare these particulars, they are for guidance purposes only. All measurements are approximate and for general guidance purposes only and whilst every care has been taken to ensure accuracy, they should not be relied upon and potential buyers/tenants are advised to recheck the measurements.